

COMPACT WHEEL LOADERS

W50C | W60C | W70C | W80C





High productivity built on experience.

Versatile and compact, New Holland's C Series range of compact wheeled loaders are totally new in design, and offer a fresh alternative to the traditional farm materials handling solutions.

Low total cost of ownership

C Series models feature an advanced 3.4 liter, 4-cylinder, Tier 4B compliant turbocharged multiple injection high pressure Common Rail engine, with waste gate for optimum turbo pressure stability. Developed in house by sister company FPT Industrial, who pioneered low emission, high efficiency solutions for on and off-road applications, this engine delivers high power, low fuel consumption with very low maintenance requirements. In addition, thanks to the maintenance-free Diesel Oxidation Catalyst (DOC), the end result is high performance and reduced total cost of ownership.

High versatility

The choice of one or two auxiliary hydraulic circuits and the availability of high flow in combination with creep speed allows work to be done at max flow at a constantly low forward pace. This capability is useful in a number of specialist applications such as snow blowing and yard sweeping.

Superior performance

The weight distribution enables the new compact wheel loader to fully benefit from its impressive improved lifting capacity. The superior hinge pin height and the contoured arms on Z-bar models, make it easy to load at the center of the trailer or feed wagon, without touching the edge. The automatic Glide-Ride system engages at speeds over 5.5km/h to prevent arm bouncing and to allow smooth travel at maximum road speed. Everything contributing to great productivity.

High precision

The new Inch & Brake pedal progressively disengages the transmission in the decelerating phase while progressively engaging the brakes, giving the operator millimetric control of the machine at low speeds. The all-in-one joystick with proportional auxiliary control, flow memory button, float function and F-N-R switch puts all the machine's controls in the operator's hand.

Make your choice

The four model, four wheel drive, articulated steer range, with power outputs of 58hp – 75hp, and operating capacities of 1.9t – 2.5t to a height of 3.1m – 3.4m respectively, offer high performance in a very agile package. The impressive performance figures are backed up by useful design features such as the low cab height of just 2.46m and max width of 1.74m on the smallest W50C model, which make it ideal for access to low farm buildings and narrow feed passageways. Added to these compact dimensions is the tight turn angle made by the articulated steering system, which makes it more manoeuvrable and user friendly than its all-wheel-steer competitors. The new cab design affords the operator a spacious working environment, the four pillar cab frame providing almost 360 degree visibility with minimal blind spots, is wide, bright and airy. The electro hydraulic joystick is truly multi-functional, making daily feeding or loading routines a swift and efficient affair.

Models	Engine Power (hp)	Tipping Load at Full Turn (kg)	Standard / High Hydraulic flow (lpm)
W50C	58	2400	67 / -
W60C	64	2600	67 / -
W70C	75	2700	85 / 130
W80C	75	3000	85 / 130



Clean, powerful engines.

The entire range boasts 3.4 litre Common Rail F5H engines developed by FPT Industrial that comply with the stringent Tier 4B emissions regulations. Advanced Common Rail technology delivers precise fuelling for optimal response and has also reduced fuel consumption significantly compared to previous models. This super-quiet engine develops up to 75hp and up to 316Nm of torque for guaranteed productivity and operator comfort. The entire range uses the Diesel Oxidation Catalyst (DOC) technology for Tier 4B compliance, which is maintenance-free and further enhances efficiency to reduce total cost of ownership.



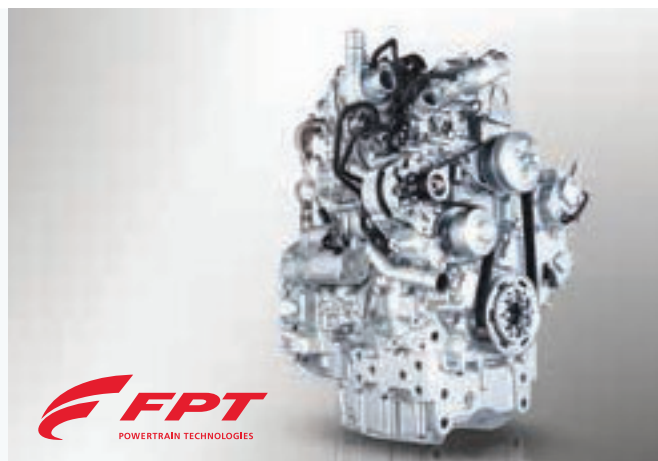
Powered by FPT Industrial

New Holland are not going it alone when it comes to Tier 4 technology, they can draw on the experience of their in-house engine development specialist: FPT Industrial.

Pioneers: Common Rail technology developed by FPT Industrial at their R&D excellence center in Arbon, Switzerland in the 1980s and brought it to the masses in 1997 on the Alfa Romeo 156. They were the very first to introduce it on agricultural machines on the TS-A tractor. Pioneering. Always.

Cleaner: For the eighth consecutive year, CNH Industrial has topped the Dow Jones Sustainability World and Europe Indexes for the Industrial Engineering sector. Cleaner. Everywhere.

Proven: FPT Industrial have already produced over 345,000 F5C engines since the launch in 2007. Reliability. Confirmed.



DOC: efficient emissions technology

- DOC technology is used to meet Tier 4B emissions regulations
- Diesel Oxidation Catalyst converts pollutants present in the exhaust stream to harmless substances such as carbon dioxide and water
- The DOC provides a regeneration-free solution for a cleaner environment, all the fuel used goes to powering the machine



Common Rail. Common sense.

- Your compact wheel loader receives precisely the amount of fuel it requires, maximum power is produced at 2500rpm
- The optimised combustion process results in more efficient engines which are better able to respond to your demands



Long service intervals

- Service intervals have been further extended to an industry leading 500 hours
- Saving both time and money!

Reducing fuel consumption

- With the use of Common Rail and DOC technology across the range, fuel consumption has been reduced significantly
- Precision fueling is key to fuel efficiency



Engineered for maximum precision.

Press & go hydrostatic transmission

All models in the range are equipped with hydrostatic transmissions, you just press the accelerator and go, smoothly and without fuss. Maximum road speed is 33km/h when the optional High Travel Speed is specified, more than fast enough to get from A to B around the farm. With the inching & brake pedal, more power can be diverted to the loaders hydraulics without disconnecting the drive, while maintaining a constant engine rpm, useful in manure handling for example. A creep speed option is also available on all models except the W50C, whereby the travel speed can be set and adjusted in the 1-5km/h range, useful for snow blowing and yard sweeping applications.





Millimetric precision

- The new Inch & Brake pedal progressively disengages the transmission in the decelerating phase while progressively engaging the brakes
- Millimetric control of the machine is achieved at low speeds
- With the same precision you can accomplish every task with the all-in-one Joystick with flow memory button
- The 3rd or 4th functions are proportionally controlled



Powerful hydraulics

- On the two smallest models there is a 67l/min pump running at 2500rpm
- On the larger two models there is a choice of the standard 85l/min pump or the High Flow pump producing 130l/min
- On all models the pump powers both the hydraulics and the steering, and for safety, there is a priority valve to favor the steering demand



Minimum speed, maximum flow

- The High Flow option comes with the new Creep Speed, which provides maximum hydraulic flow at constant speed in the 0 to 5.5km/h range
- Front electrical socket and Return De-pressurized drain complete the package



Short Turning Radius

- The new compact wheel loader range features a steering angle of 40° to each side, fully hydraulic center pivot steering, emergency steering function and the front and rear wheels follow the same track



Excellent stability

- The rear axle on the C series oscillates to a total angle of 20 degrees, improving both safety and stability
- Compared to a machine with an oscillating center pivot, rear axle oscillation gives operators better perception of the machines stability
- The Glide-Ride system, self activated only when needed over 5.5km/h, prevents arm bouncing



Differential choice

- There are 3 differential configurations:
- Limited slip front and rear (all models)
- Front and Rear open differential
- Open with 100% lock on front and rear differentials (W70C - W80C)

Superior comfort and safety.

Almost unobstructed 360 degree vision is offered by the newly designed cab. The elevated driving position and an abundance of curved glass within four narrow pillars ensure the best view of any materials handler on the market. Access via the wide opening glass door is easy and straight forward, operators will appreciate the bright airy space and fully opening side window and low noise levels of 71dB(A). Further comforts include 10 air vents, air conditioning, air suspended seat, tilting and telescopic steering column and the many useful storage compartments. All instruments and controls are positioned on the operators right side and include an electro hydraulic multi-function joystick, with forward and reverse controls.



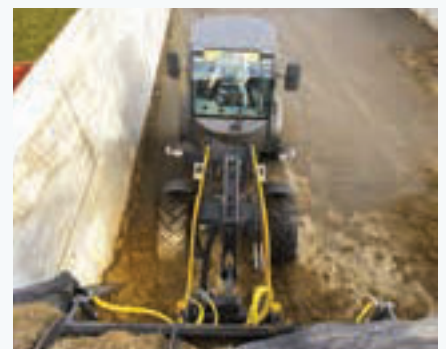
Designed to save time

- The cab has been lowered to increase accessibility to low buildings
- Useful features include the fully opening door and side window, which can be locked open



Deluxe cab for demanding operators

- Easy entry is guaranteed courtesy of the low cab floor and wide steps
- The Deluxe option includes additional storage compartments and steering wheel height adjustment



Superior cab safety

- The cab comes standard with ROPS and FOPS Level 2 protection guaranteeing your safety at work

Setting new standards of performance and productivity.

The new New Holland compact wheel loader series is designed to maximize productivity and minimize the time needed for servicing and attachment changeover. The four model line-up, ranging from the 4.9 ton W50C to the 5.9 ton W80C, delivers consistently high levels of performance in every task. Operators enjoy the superior comfort of the cab, maximizing their productivity with minimum fatigue.



Waste no time servicing

- All service points are easily accessible from the ground

Optimal weight distribution

- Optimal weight distribution means a larger lifting capacity
- The proof is in the numbers with the W50C having a 400kg increase in lifting capacity to 2100kg



Superior dump height and ride

- The superior hinge pin height and the contoured arms on Z-bar models make it easy to load at the center of the trailer or feed wagon
- The automatic Glide-Ride system engages at speeds over 5.5km/h to prevent arm bouncing and smooth travel at maximum road speed



Manage your machine from the comfort of your office

My PLM[®] Connect enables you to connect to your machines from the comfort of your office through the utilization of the mobile network. You can stay in touch with your machines at all times, and even send and receive real-time information that saves time and enhances productivity. My PLM[®] Connect is available for the New Holland Construction range of Backhoe Loaders, Compact Wheel Loaders, Wheel Loaders and Skid Steer Loaders.

MYPLMCONNECT

Built in versatility.

Two choices of linkage are available, depending on the end users preference, either the Z-bar linkage or the TC linkage can be specified. Z-bar is the most versatile linkage type. It offers more breakout force thanks to the two lifting cylinders and a higher dump height, ideally suited for most agricultural applications such as winter feeding, grain handling and manure handling. TC (Tool Carrier) is the best linkage choice for regular pallet or box handling. Visibility on the pallet forks is superior owing to the single, centrally positioned lift ram, and the payload is marginally higher. The quick hitch option in addition to the auxiliary quick release couplers and electrical socket make changing multiple attachments a stress free task.



Fast attachment change over

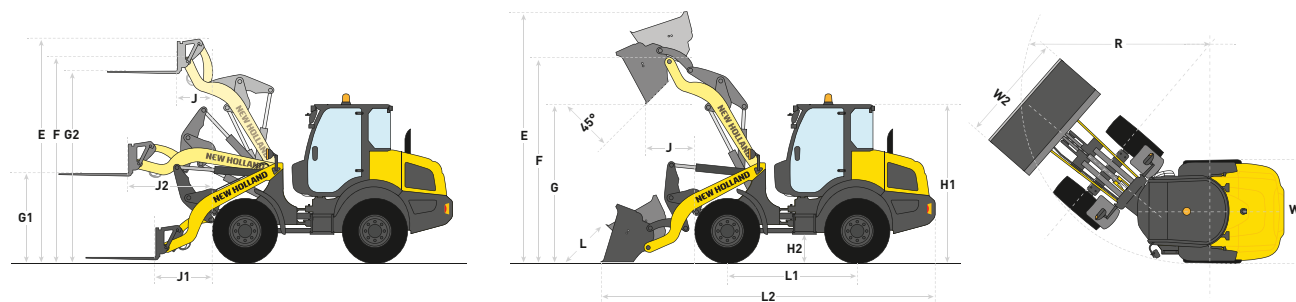
- Attaching implements can be done from the comfort of the cab thanks to the convenient hydraulically locking quick attach headstock
- A choice of headstock designs are also available depending on preference
- The front electrical socket allows for multifunction or special attachments

High performance attachments

- A wide variety of high performance attachments are available. Please contact your local dealer for further information

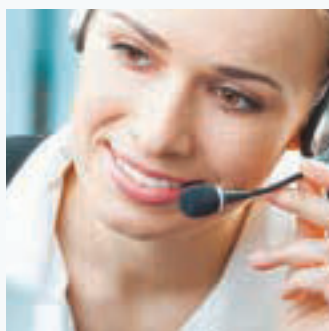
Models		W50C	W60C	W70C	W80C		
Engine*		F5H	F5H	F5H	F5H		
No. of cyl. / Aspiration / Valves / Emission level Tier-Stage		4 / T / 2 / 4B-4	4 / T / 2 / 4B-4	4 / T / 2 / 4B-4	4 / T / 2 / 4B-4		
Capacity	(cm³)	3400	3400	3400	3400		
Bore and stroke	(mm)	99x110	99x110	99x110	99x110		
Max. engine power - ISO14396	[kW/hp(CV)]	43/58	48/64	55/75	55/75		
Max. torque ISO TR14396 @2500 rpm	(Nm)	245	261	316	316		
Service interval	(Hrs)	500	500	500	500		
Fuel tank capacity	(l)	87	87	87	87		
Electrical system							
Voltage	(V)	12	12	12	12		
Battery / Alternator	(Ah)	95 / 120	95 / 120	95 / 120	95 / 120		
Cab							
Max. noise level	[dB(A)]	71	71	72	72		
Vision	(degrees)	360	360	360	360		
Tilting & telescopic steering wheel		○	○	○	○		
F-N-R integrated on joystick		●	●	●	●		
Hydraulics system							
Type of pump		Gear pump for loading and steering hydraulics					
Standard / High flow (@ 2500rpm)	(lpm)	67 / -	67 / -	85 / 130	85 / 130		
Transmission							
Type		Hydrostatic 4-wheel drive					
Operating speed range	(km/h)	0-5	0-5	0-5	0-5		
Travel speed range	(km/h)	0-20	0-20	0-20	0-20		
Optional high travel speed	(km/h)	-	-	33	33		
"Inch & Brake" Pedal		●	●	●	●		
Creeper		-	○	○	○		
Differential lock							
Limited slip diff front & rear		○	○	○	○		
Open diff front & rear		○	-	-	-		
Open diff with 100% lock on front & rear		-	-	○	○		
Specifications with forks		Z-BAR	TC	Z-BAR	TC	Z-BAR	Z-BAR
Tipping load straight	(tonnes)	2.8	3.0	3.0	3.2	3.1	3.6
Tipping load at full turn @40°	(tonnes)	2.4	2.6	2.6	2.8	2.7	3.0
Payload @80%	(tonnes)	1.9	2.1	2.1	2.2	2.2	2.5
Operating weight	(kg)	5020	4910	5160	4940	5559	5910
E - Max. overall height	(m)	3.48	3.63	3.53	3.65	3.63	3.73
F - Hinge pin height	(m)	3.14	3.11	3.18	3.13	3.29	3.40
G2 - Max. fork height	(m)	2.90	2.96	2.95	2.97	3.08	3.19
G1 - Forks height @ max. reach	(m)	1.27	1.34	1.27	1.34	1.34	1.39
J1 - Reach @ ground level	(m)	0.94	0.77	1.01	0.80	0.99	0.99
J2 - Max. reach	(m)	1.35	1.26	1.41	1.27	1.43	1.43
J - Reach @ max. height	(m)	0.59	0.46	0.63	0.47	0.61	0.61
Specifications with bucket		Z-BAR	TC	Z-BAR	TC	Z-BAR	Z-BAR
Bucket volume (SAE)	(m³)	0.7-1.0	0.7-1.0	0.8-1.1	0.8-1.1	0.9-1.2	1.0-1.3
Breakout force	(kgF)	6042	4104	5481	3925	6393	6317
L2 - Length with bucket	(m)	5.28	5.23	5.39	5.33	5.62	5.68
E - Max. bucket height	(m)	3.14	3.94	3.18	4.09	3.29	3.40
F - Hinge pin height	(m)	3.14	3.11	3.18	3.13	3.29	3.40
G - Dump height @45°	(m)	2.49	2.34	2.52	2.35	2.60	2.69
L - Dig depth	(mm)	730	130	120	140	100	840
J - Reach at full height	(mm)	770	710	830	740	850	850

● Standard ○ Optional - Not available * Developed by FPT Industrial



Models		W50C	W60C	W70C	W80C
Dimensions					
H1 - Height	(mm)	2460	2460	2600	2680
H2 - Ground clearance	(mm)	450	450	440	490
W1 - Rear axle width	(m)	1.74	1.74	1.80	1.86
W2 - Implement width	(m)	1.90	2.05	2.05	2.10
L1 - Wheelbase	(m)	2.08	2.08	2.22	2.23
R - Turning radius	(m)	3.72	3.72	3.99	3.99

New Holland Top Service: customer support and customer information.



Top Availability

If you need information, or have an out of hours question, ring our toll-free number*. All day, every day, we are just a call away.



Top Speed

Express parts delivery: when you need it, where you need it!



Top Priority

Fast-track solution during the season: because your harvest can't wait!



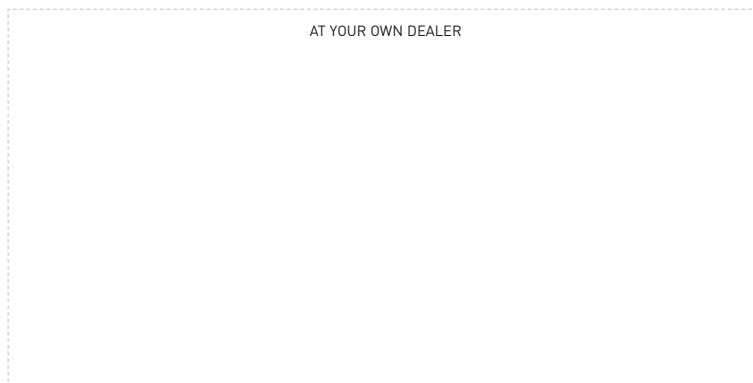
Top Satisfaction

We drive and track the solution you need, keeping you informed: until you are 100% satisfied!



For more details, ask your New Holland dealer!

* Calls to the Top Service team are free from landlines in the United Kingdom and Republic of Ireland. UK-based mobile calls are also free, but Republic of Ireland mobile users should call 01 2421881 and this will be charged at your standard network rate.



www.newholland.com/uk - www.newholland.com/ie

